



# Rejex-it



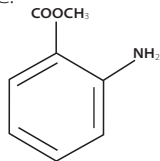
## Migrate™ for Turf Technical Information Bulletin

### WHAT IS MIGRATE™?

Migrate™ is a microencapsulated formulation of Methyl Anthranilate used for the non-lethal control of Canada geese. Methyl Anthranilate, the active ingredient in Migrate™, is a food grade repellent which exceeds US Food Chemical Codex (FCC) specifications, and is classified as Generally Recognized As Safe (GRAS) by the Expert Panel of the Flavor & Extract Manufacturers Association (FEMA). Methyl Anthranilate is an additive to foods, food flavors, and fragrances and is used as a flavoring agent in beverages, ice creams, candy, gelatins, puddings and chewing gum.

### CHEMICAL AND PHYSICAL PROPERTIES

Common Name: Methyl Anthranilate  
 Chemical Name: methyl 2-aminobenzoate  
 Active Ingredient: 14.5% methyl anthranilate  
 Water Solubility: Miscible with water in any ratio  
 Signal Word: Caution  
 Appearance: Light blue to tan, thick slurry  
 Odor: Grape  
 PH: 5.6  
 Bulk Density: 1.02 g/ml, 8.5 lbs/gal.  
 Boiling Point: 100°C, 212°F.  
 Toxicity: All ingredients are food grade. Acute oral LD<sub>50</sub> in rats is >5000 mg/kg body weight.  
 Safe Handling: Avoid excessive exposure. Good personal and general hygiene and good housekeeping should be followed. Use a facemask for spraying.  
 Specific Gravity: ~0.95 @ 25°C.  
 Molecular Formula: C<sub>8</sub>H<sub>9</sub>NO<sub>2</sub>  
 Molecular Weight: 151.17  
 Structural Formula:



### APPLICATIONS

This product may be used to repel Canada geese from turf areas such as golf courses, lawns and parks. Apply Migrate™ at a rate of 2.0 gal/acre (turf height 2-3") at 5-7 day intervals as increased geese activity might require. It is best applied with spray equipment such as garden sprayers or commercial power sprayer after dilution with water at a ratio of 1 part product to 20 parts water (40 gal/acre of spray mixture). For shorter turf (1-2" height), use 1 gallon of Migrate™ for Turf per acre in 20 gallons water. Consult your technical sales representative for advice or see the charts below:

### TURF AREA TO BE TREATED

Turf Height	1,000 sq.ft.	1/3 acre	1/2 acre	1 acre	1 ha
3-4"	9.0 oz.	1.0 gal	1.5 gal	3 gal	7.5 gal
2-3"	6.0 oz	3.0 qt	1.0 gal	2 gal	5.0 gal
1-2"	3.0 oz	3.0 pt	2.0 qt	1 gal	2.5 gal
<1"	1.5 oz	1.5 pt	1.0 qt	2 qt	5.0 qts

### GUIDELINE FOR COVERAGE

Migrate™ for Turf	Spray Mix	Turf Height in Inches			
		0-1"	1-2"	2-3"	3-4"
1 quart	5 gallon	20,000 sqft	10,000 sqft	6,000 sqft	2500 sqft
1 gallon	20 gallon	2 acre	1 acre	1/2 acre	1/4 acre
6 gallon	100 gallon	10 acre	6 acre	2.5 acre	2.3 acre

### WEATHER AND TURF CONDITIONS

The area to be treated should be dry and freshly mowed. Do not mow the treated area for several days following treatment. Leave clippings, if possible. Do not spray during rain or immediately before expected rain. Do not apply when sun is directly overhead or in freezing conditions. Apply either in morning after dew has disappeared or in the evening.

### APPLICATION DIRECTIONS

Shake well and dilute with water as instructed on the label. Spray evenly on targeted area, providing thorough coverage and let material dry before allowing human activity. Always use high pressure to ensure a small droplet size and complete blade coverage. Repeat as often as every four days or as needed by bird activity and turf growth. Rinse all equipment after use.

### GOOSE BEHAVIOR

After the second or third applications, decreasing quantities of Migrate™ will repel geese. Additional applications of Migrate™ may be required if migrating or non-resident birds arrive after the initial treatment. Migrate™ must be applied before nesting begins. Once nests are established, birds may leave temporarily to feed elsewhere, but will return to protect their eggs or care for their young.

**PRECAUTIONS:** Please consult the product label and current Material Safety Data Sheet (MSDS) for precautionary information, first aid and toxicology. To obtain a copy of the MSDS or label, please visit our website: [www.rejexit.com](http://www.rejexit.com) or call Rejex-it toll free: 1-866-53-BIRDS (1-866-532-4737).

### PACKAGE SIZES

2x2-1/2 Gal containers  
250 Gal totes  
4x1 Gal containers  
55 Gal Barrel

### CASES

36 cases/pallet  
1 tote/pallet  
36 cases/pallet

Emergency 24 Hour First Aid: 1-800-892-0099

The information contained herein is, to our knowledge, accurate as of the published date of this bulletin. All recommendations are made without guarantee, since the conditions of use are beyond our control. All products are sold without warranty, expressed or implied, and on the firm condition that purchasers shall make their own test to determine suitability of such products for their purpose and that all risks are assumed by the user.

THIS IS NOT A LABEL AND DOES NOT PROVIDE COMPLETE USE INFORMATION. READ ENTIRE LABEL. USE STRICTLY IN ACCORDANCE WITH PRECAUTIONARY STATEMENTS AND DIRECTIONS AND WITH APPLICABLE STATE AND FEDERAL REGULATION.

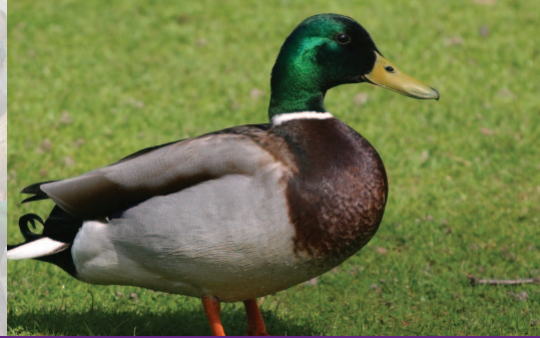
# NATURAL FORCES™

Natural Forces, LCC P.O. Box 2601, Davidson, NC 28036  
Toll free: 866.53.BIRDS (866.532.4737) Fax: 704.973.7777  
[www.naturalforcesllc.com](http://www.naturalforcesllc.com)

© 2009 Natural Forces, LLC



**Rejex-it**



## Frequently Asked Questions About Rejex-it® Migrate™ for Turf

### WHAT IS MIGRATE™?

Migrate™ is a microencapsulated formulation of Methyl Anthranilate used for the non-lethal control of Canada geese. Methyl Anthranilate, the active ingredient in Migrate™, is a food grade repellent which exceeds US Food Chemical Codex (FCC) specifications, and is classified as Generally Recognized As Safe (GRAS) by the Expert Panel of the Flavor & Extract Manufacturers Association (FEMA). Methyl Anthranilate is an additive to foods, food flavors, and fragrances and is used as a flavoring agent in beverages, ice creams, candy, gelatins, puddings and chewing gum.

### HOW DOES IT WORK?

Rejex-it® Migrate™ For Turf makes turf unpalatable to geese, forcing them to feed elsewhere. The Migrate™ For Turf odor itself does not affect the birds. The geese must eat treated turf to experience the "taste" aversion.

### DOES IT HARM THE BIRDS OR ANIMALS?

No, it is a similar reaction in birds as strong cayenne pepper is to humans. It will not hurt animals, it only affects birds, but doesn't harm them. Migrate™ For Turf is a microencapsulated repellent made from food grade ingredients.

### WHAT IS THE BEST TIME TO USE MIGRATE™ FOR TURF?

Winter and spring is the best time to solve your duck and goose problems. In winter, the available habitat for geese is reduced, and if Migrate™ For Turf is used to repel them from the area, they may migrate further south sooner. In spring, geese are looking for habitats with food and water to raise their young. If you repel them when they first arrive, they will most likely stay away for the entire season. If you wait until summer, you may not be able to drive away a flock of sub-adult geese that have been raised on your turf.

### DO I HAVE TO DILUTE MIGRATE™ FOR TURF?

Generally, one quart to 3 gallons of water will treat 4000 sq. ft. of turf at 1-2" height. Use 1 gallon Migrate™ For Turf to 14 gallons water for 16,000 sq. ft., and 2.5 gallons to 25-70 gallons of water for 1 acre. For better coverage, the addition of some wetting agents is recommended.

### IS MORE MIGRATE™ FOR TURF BETTER?

No, for best results, apply Migrate™ For Turf within the recommended amounts.

### CAN I PUT IT ON JUST THE PARTS OF MY GRASS THE BIRDS EAT?

No, treat the entire area.

### HOW SOON AFTER APPLICATION CAN I GO ON THE LAWN?

When the product has dried on the grass. On a dry day this is usually within one hour of application.

### WILL IT HARM MY GRASS?

No, the chemical is microencapsulated and never actually touches the blades. It can also be sprayed on flowers and other plants eaten by birds.

### HOW MANY TIMES DO I NEED TO RE-APPLY MIGRATE™ FOR TURF?

Normally, four times a season with the first two applications within ten days. More if they are resident birds, less if they are migratory.

### CAN I SOAK BREAD AND FEED IT TO THE BIRDS?

No, that is considered baiting and is illegal. Migrate™ For Turf must be used as directed to work effectively.

### CAN I SPRAY MIGRATE™ FOR TURF IN THE WATER?

No, it is formulated to work on turf only.

### WHAT IF IT GETS ON MY SKIN?

Wash with soap and water.

### CAN I STORE THE DILUTED SPRAY MIX?

It is not advisable to keep the diluted spray mix for more than a day or it may start to biodegrade due to microorganisms from the water.

### HOW DO I PLACE AN ORDER?

Call Rejex-it® 1-866-53-BIRDS (866-532-4737) or visit [www.rejexit.com](http://www.rejexit.com).

### FOOD PRODUCTS CONTAINING METHYL ANTHRANILATE

Fruit juices	16 ppm
Alcoholic beverages	.02 ppm
Ice cream/sherbets	21 ppm
Candy	56 ppm
Baked goods	20 ppm
Gelatins/puddings	23 ppm
Chewing gum	2200 ppm

### NATURALLY OCCURRING SOURCES OF METHYL ANTHRANILATE

Concord Grapes	Orange Blossoms
Jasmine Blossoms	Acacia Blossoms
Gardenia Blossoms	Neroli Oil

**NATURAL FORCES™**

Natural Forces, LCC P.O. Box 2601, Davidson, NC 28036  
Toll free: 866.53.BIRDS (866.532.4737) Fax: 704.973.7777  
[www.naturalforcesllc.com](http://www.naturalforcesllc.com)

© 2009 Natural Forces, LLC